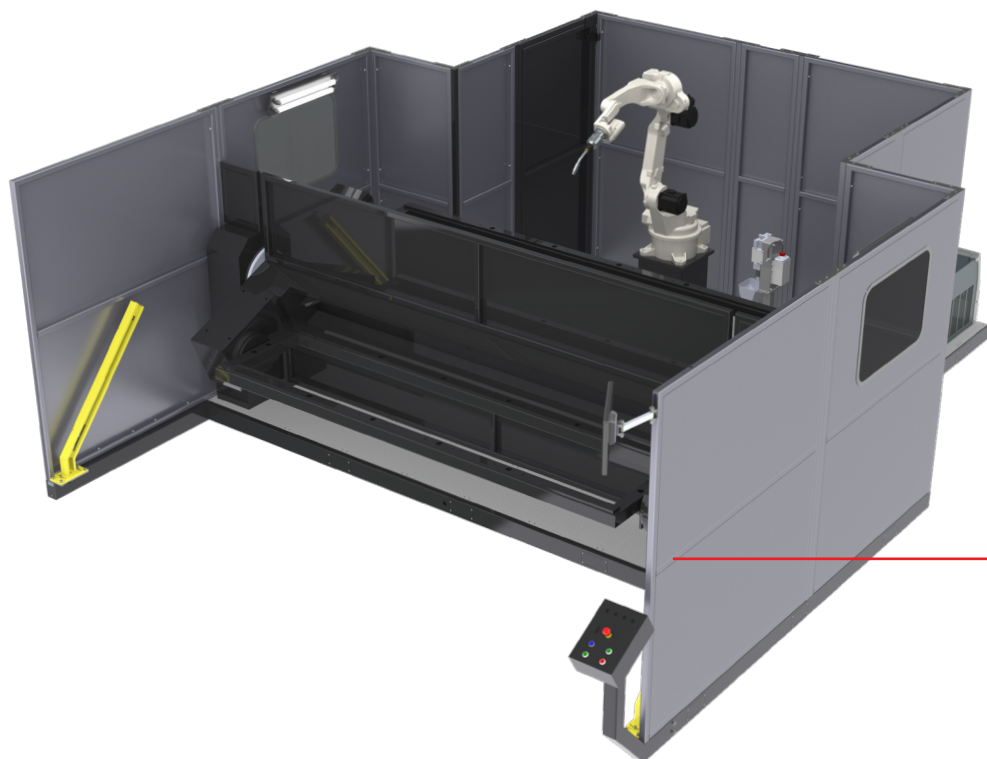




*Ideal for Medium and High Productivity*



*Modular working base for welding*

*Single point of supplying*

*Safety sensors for robot, power door and maintenance*

*Fast device exchanging system*



The **Advantage REVOCELL HL** was designed for high productivity as it works with the robot and source from the same manufacturer for perfect welding communication and synchronism.

It also has 02 (two) workstations, optimized workspace with single point of supply and monitored maintenance door.

**Included in package**



+

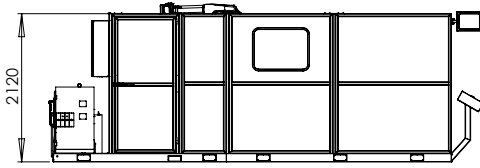


+

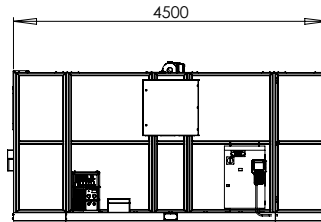


|   |                       |
|---|-----------------------|
| <b>Workstation dimensions</b>                   | 750 x 3000 mm         |
| <b>Capacity</b>                                 | 1000 kg               |
| <b>Maximum current for power source</b>         | 63A                   |
| <b>Maximum current for controller and robot</b> | 16A                   |
| <b>Feeding</b>                                  | 380V Trifásico        |
| <b>Dimensions</b>                               | 4500 x 6160 x 2120 mm |
| <b>Weight</b>                                   | 6500 kg               |
| <b>Power</b>                                    | 26 kVA                |
| <b>Pressure</b>                                 | 6 BAR                 |
| <b>Air Flow</b>                                 | 8,8 L/s               |
| <b>Size in m<sup>2</sup></b>                    | 27,7m <sup>2</sup>    |

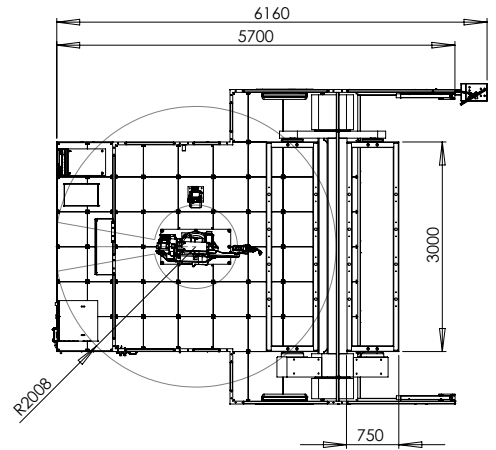
## Measurements



Front



Side



Working Area

## Standard Components



OTC Robot

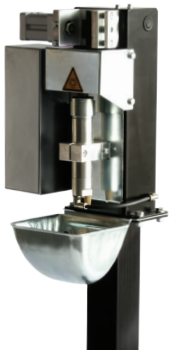


Power Source

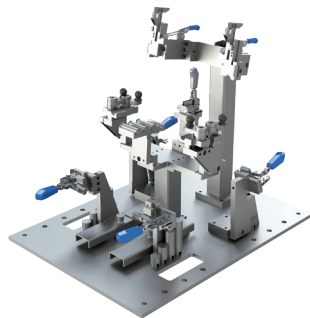


SU477 Robotic Welding Torch

## Optionals



Cleaning Unit



Tooling



Neuron-S Adapt